



Overview: AssetTrack™ - Asset Management Solution from AMI

Asset Management is about maintaining complete, current and accurate data about your hardware and software assets, and using that information to make informed, cost-saving decisions.

In dynamic environments, especially in IT, asset information changes all the time. You need efficient tools and processes to maintain asset data as these changes occur, from the time assets are ordered until they are disposed. Without the processes and tools to maintain accurate data, your investment in asset management, and the business intelligence it is meant to produce, is meaningless.

Solution Overview

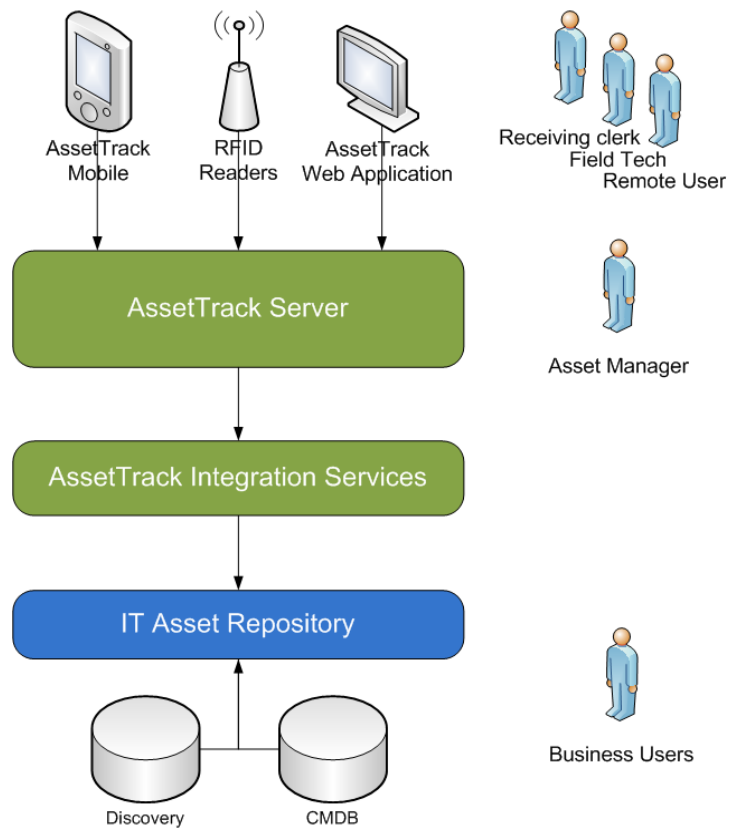
AMI provides the best of breed tools, processes and professional consulting services you need to maintain accurate asset data at minimal cost:

Data Capture - AssetTrack minimizes time spent capturing data over manual or spreadsheet-data entry using handheld barcode scanners, scan sheets, web forms and RFID readers.

Data Reconciliation - AssetTrack Server eliminates wasted time reconciling collected data by detecting duplicate records, improperly formatted data and conflicts: issues that cause database corruption over time.

Integration - AssetTrack's Integration Services eliminates risk of developing integrations with your existing IT asset repository.

Management and Reporting - AssetTrack provides a built-in asset repository, or integrates with third-party repositories, that can relate asset data with discovery, service and financial data, including audit trails and other reports needed by the enterprise.



Fast, Easy Implementation

Typical AssetTrack implementations take 5-10 business days. AssetTrack's form designer makes it easy to create new fields, forms, and business rules to meet your specific business requirements. AMI professional consulting services can ensure a smooth implementation by providing process analysis, installation, configuration, and training services.

Data Entry with Mobile Devices

AssetTrack Mobile runs on Windows Mobile devices with integrated barcode and RFID scanners and facilitates the rapid collection of data in the field.

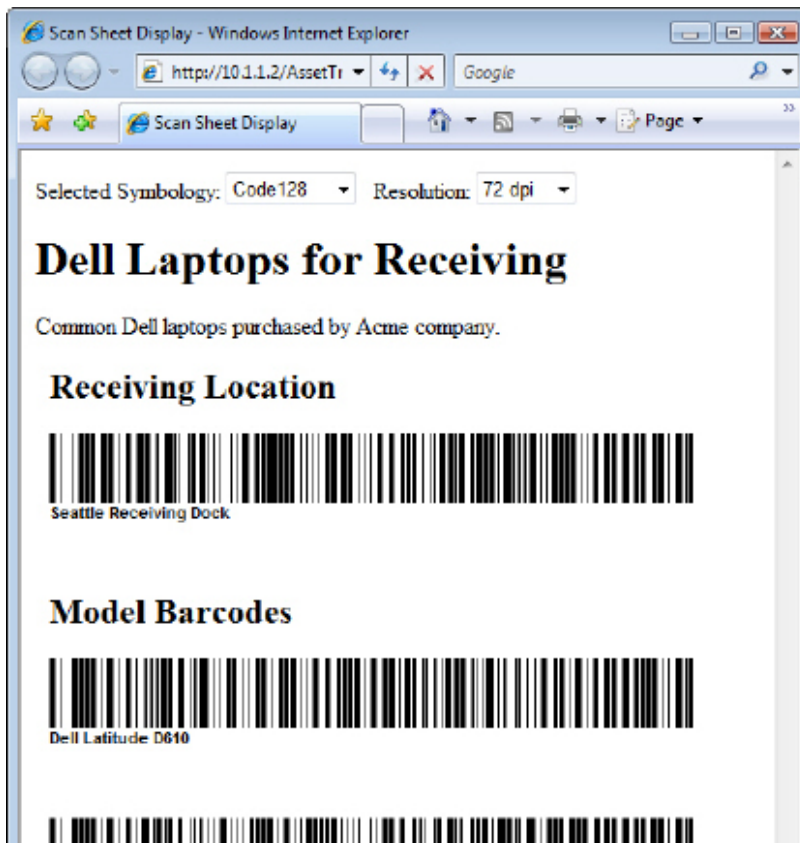
When integrated with an existing asset repository, data from the repository (e.g. Assets, Locations, Contacts, Products, Departments, etc.) is available to field personnel using AssetTrack Mobile. Data collected using AssetTrack Mobile is subsequently transmitted to the repository.

Forms in AssetTrack Mobile can be configured to support a wide range of business scenarios like receiving, inventories, audits, and data true-ups. Forms are tailored to your exact business needs by displaying only relevant fields, filtering available data, defining pick-lists, and enforcing data entry rules.

Designed for enterprise scalability and rapid data entry, AssetTrack Mobile allows technicians to maximize their efficiency and accuracy by providing autocomplete controls and minimizing use of the stylus. Using scan sheets, it's possible for a technician to perform data entry with only the scanner and without ever having to tap on the device screen.



AssetTrack Mobile running on an Intermec CN3 with an IP30 RFID attachment.



Scan sheets like this one allow technicians to use their scanner to specify data rather than to tap in the information with a stylus. In addition to scan sheets, forms can be configured to detect patterns in scanned data so that they can be "taught" to recognize, say, HP and Dell serial numbers.

Web-based Data Entry

AssetTrack - AssetTrack - Windows Internet Explorer
http://10.1.1.2/AssetTrack/Default.aspx

AssetTrack 3.1.145.0
Logged in as: Administrator, The | Logout | Account | Settings | Help
Search 95800431 Go Advanced Search

Web IMAC

Use this form to enter in data about asset installation, moves, additions, and changes.

Location and User Information

Enter the new location, user and status for the assets in the asset list.

Site: Seattle
Floor: B
Room: 112B
Contact: Walters, Jack [JW002]
Status:

- Dante, Silvio [sdante@acme.com]
- Devaroux, Blanche [blanche@acme.com]
- Doorbuster, Justin [JD2930]
- Hadley, Elizabeth [ehadley]**
- Olsen, Jeffrey [jo@acme.com]
- Seward, Harry [hseward@acme.com]

Assets

Enter asset tags into the text box and click the Add Asset button to add assets to the asset list.

<input type="checkbox"/>	Serial	Model	Comment
<input type="checkbox"/>	95800365	Latitude D620	Laptop
<input type="checkbox"/>	7246345	ASR 1000	Monitor

Remove from List

Save Cancel

An AssetTrack web form designed for an Install Move Add Change (IMAC) business process that tracks the day-to-day movement and assignments of assets. The nature of this form makes it a good candidate for being a web form, since it will be used frequently by a wide range of IT personnel, not necessarily just those equipped with mobile devices.

AssetTrack web forms offer a customizable way to expose and collect information when mobile device usage and exposing the full asset repository user interface are undesirable. Like the mobile device forms, web forms present data from the asset repository and transmit data to the repository. Ajax-based autocomplete features allow users to browse large volumes of repository data quickly and select the correct items.

Reviewing and Publishing Collected Data

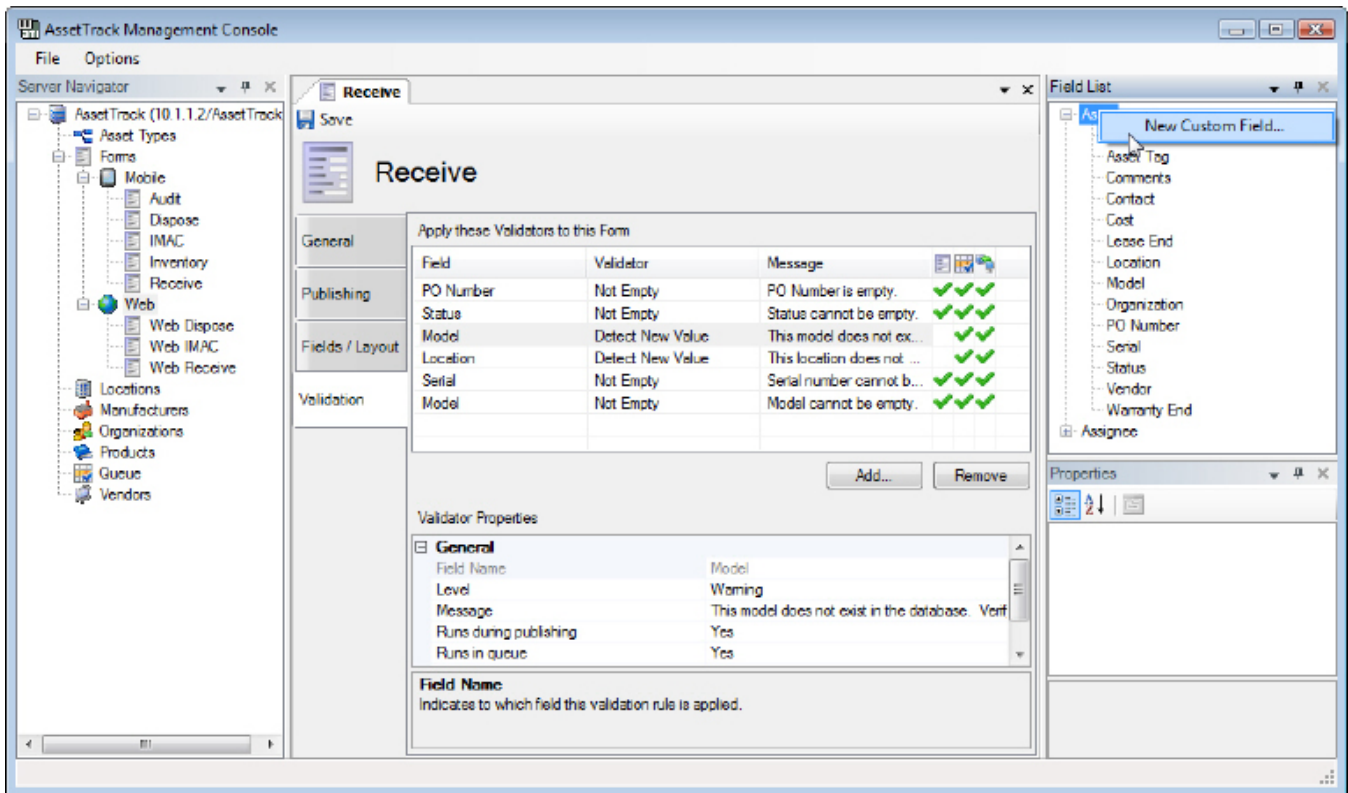
The screenshot shows the AssetTrack Management Console interface. On the left, there are two navigation panes: 'Server Navigator' and 'Queue Navigator'. The 'Server Navigator' shows a tree view of asset categories like Asset Types, Forms, Locations, etc. The 'Queue Navigator' shows a list of queues, with 'Receive (20)' selected. The main window displays a 'Receive' form with a table of 16 records. The table has columns for Site, Floor, Room, Status, Serial, Asset Type, Manufacturer, Model, PO Number, User, and Date. A tooltip over the 'Serial' column of the third row indicates 'Serial number cannot be empty.' The status bar at the top of the queue shows '16 Clean Records', '1 Message', '2 Warnings', and '1 Error'.

Site	Floor	Room	Status	Serial	Asset Type	Manufacturer	Model	PO Number	User	Date
Seattle	B	112B	Received	C07476155	Laptop	Dell	Latitude D630	P00486	admin	2/2/2009 5:06:28 PM
Seattle	B	112B	Received				Latitude D630	P00486	admin	2/2/2009 5:06:28 PM
Seattle	B	112B	Received	C05949657	Laptop	Dell	Latitude D630	P00486	admin	2/2/2009 5:06:28 PM
Seattle	B	112B	Received	C07577702	Laptop	Dell	Latitude D630	P00486	admin	2/2/2009 5:06:28 PM
Seattle	B	112B	Received	C03564093	Laptop	Dell	Latitude D630	P00486	admin	2/2/2009 5:06:28 PM
Seattle	B	112B	Received	C06631120	Laptop	Dell	Latitude D630	P00486	admin	2/2/2009 5:06:28 PM
Seattle	B	112B	Received	C08166510	Laptop	Dell	Latitude D630	P00486	admin	2/2/2009 5:06:28 PM
Seattle	B	112B	Received	C03942584	Laptop	Dell	Latitude D 630	P00486	admin	2/2/2009 5:06:28 PM
Seattle	B	112B	Received	C06799214	Laptop	Dell	Latitude D 630	P00486	admin	2/2/2009 5:06:28 PM
Seattle	B	112B	Received	2100486	Laptop	Dell	Latitude D630	P00486	admin	2/2/2009 5:06:28 PM
Seattle	B	112B	Received	2100475	Network	Cisco	Catalyst 6500	P00354	admin	2/2/2009 5:06:28 PM
Seattle	B	112B	Received	2100464	Network	Cisco	Catalyst 6500	P00354	admin	2/2/2009 5:06:28 PM
Seattle	B	112B	Received	2100453	Network	Cisco	Catalyst 6500	P00354	admin	2/2/2009 5:06:28 PM
Seattle	B	112B	Received	2100431	Network	Cisco	Catalyst 6500	P00354	admin	2/2/2009 5:06:28 PM

The queue for the Receive form in the AssetTrack Management Console. Receiving dock personnel have used AssetTrack Mobile to scan in several deliveries and this data is waiting to for approval before being transmitted to the asset repository. One asset is violating a business rule by not having a serial number and is flagged by a red "X". Two others are suspect for a different reason and are marked with a yellow icon. The manager must correct at least the serial number issue before transmitting

Your repository is only as good as the data that it contains, so data quality is paramount. The AssetTrack Management Console is a central catchpoint through which all data collected by AssetTrack must pass before being transmitted to the repository. The Management Console automatically applies whatever data quality rules you've defined and flags non-conforming data for review and correction. After the data has been reviewed and approved, it can be published to the repository with a single button click.

Form Customization



A mobile device form named "Receive" is open for editing with the form designer inside AssetTrack Management Console. The active tab shows the validation rules that are in effect for the various fields on the form.

All AssetTrack forms can be customized to fit your unique business processes. Fields, field labels, validation rules, form security, and much more are all administered through the AssetTrack Management Console.

- Custom fields can be added to any form.
- Fields can be renamed to suit the terminology used in your company.
- Forms can be customized for particular processes to minimize data entry.
- Validation rules can optionally be enforced during data entry to increase data quality.
- Forms can be secured so only appropriate personnel can access a given form.



HP Software
Interoperability



Hardware Requirements

Component	Requirement
Processor	Pentium 4-class processor or better
Memory	2GB or more
Hard disk	40GB of available hard disk space
Servers	<p>AssetTrack Server supports both single and multi-server configurations and also supports Windows Server 2003/2008 clustering.</p> <p>Typical single-server installations put the asset repository, AssetTrack Server, and SQL Server all on one server.</p> <p>Typical multi-server installations put the SQL Server onto its own server or database cluster.</p>
Mobile devices	<p>The following device models are supported by AssetTrack:</p> <ul style="list-style-type: none">• Motorola MC55, MC70, MC75, MC9090• Intermec CN3, CN5• Honeywell Dolphim 7600, 7900• Other Windows Mobile/Windows CE devices upon certification <p>Windows Mobile 5 or 6 or Windows CE 5+ is required.</p>

Software Prerequisites

Component	Requirement
OS	Windows Server 2003 Family with SP1, Windows Server 2008 and all critical updates.
Database	<p>SQL Server 2005/2008 Family</p> <p>SQL Server can be installed on the local server or on a separate machine accessible by TCP/IP. Because SQL Server offers greater scalability and flexibility, it is the preferred option for use with AssetTrack Server.</p> <p>AssetTrack Server will also run on SQL Server 2005/2008 Express, the free edition of SQL Server.</p>
Runtime	<p>Microsoft .NET Framework 2.0 SP1 is required.</p> <p>Can be installed using Windows Update or downloaded directly from the Microsoft web site. The .NET Framework installation includes ASP.NET, which is required by AssetTrack Server. For ASP.NET to be installed successfully, make sure that IIS is installed successfully before installing the .NET Framework.</p>



Asset Management International

www.assetmgi.com

sales@assetmgi.com

(877) 297-7618

Copyright © 2010 Asset Management International. All rights reserved. All trademarks, trade names, service marks and logos referenced herein belong to their respective companies. Information subject to change.



Asset Management International